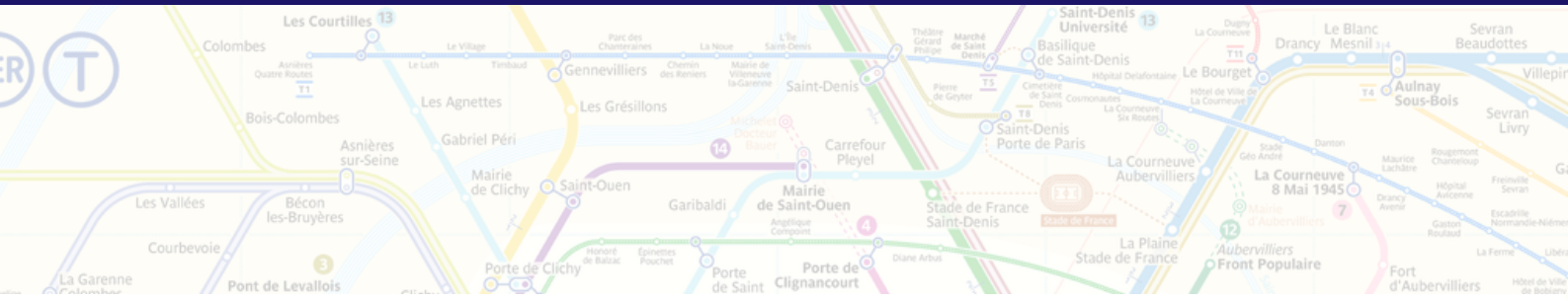


AUTONOMY MOBILITY WORLD EXPO



**Presentation booklet
Dutch sustainable mobility companies
present at Autonomy Mobility World Expo
(AMWE) 2023**





AUTONOMY

MOBILITY WORLD EXPO





INTRODUCTION

At the occasion the **Autonomy Mobility World Expo (AMWE)** on 22 and 23 March 2023 in Paris, the **Embassy of the Kingdom of the Netherlands in France** and the **Netherlands Enterprise Agency (RVO)**, in close cooperation with the **Netherlands Business Support Office (NBSO)** Lyon, the **Netherlands Business Council France (NLBC)**, **RAI Automotive Industry NL**, the **Dutch Organisation for Electric Transport (DOET)**, the **Dutch Cycling Embassy** and the **Smart Mobility Embassy**, are pleased to present you in this booklet with the Dutch companies in Sustainable Mobility showcasing their solutions and services at the Netherlands Lounge.

Come and Meet the Dutch Sustainable Mobility delegation at booth 3D (Hall 6).

You are most welcome.

Looking forward to work together on addressing societal challenges and in advancing sustainable and smart (urban) mobility in an effort to ensure transportation is safe, sustainable, zero-emission, affordable and accessible to all of us

More information? Please contact:

Adriana Voerman and/or **Joannette Polo**, Embassy of the Kingdom of the Netherlands in Paris
adriana.voerman@minbuza.nl and/or joannette.polo@minbuza.nl



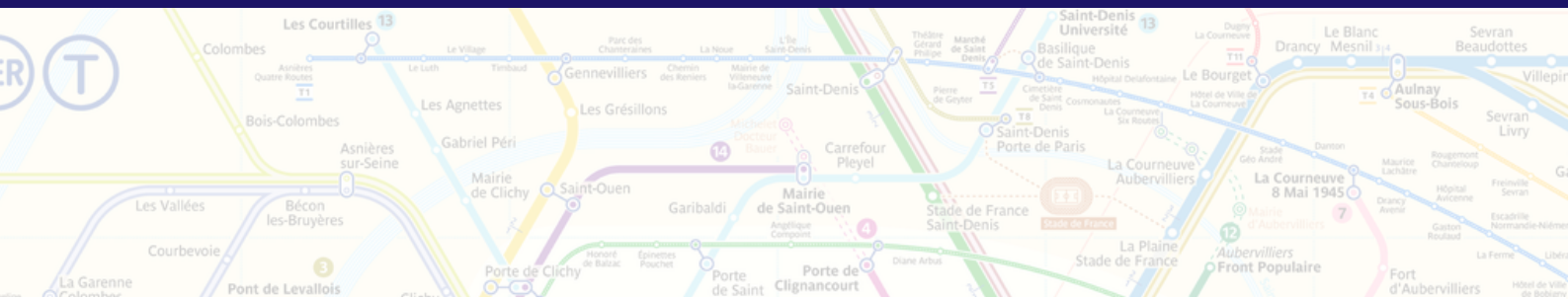


TABLE OF CONTENTS

Companies

- 05 [Abel Sensors](#)
- 06 [Alfen B.V.](#)
- 07 [Allego B.V.](#)
- 08 [ARS T&T](#)
- 09 [Bike.box](#)
- 10 [Brekr](#)
- 11 [Cargo Cycling](#)
- 12 [Cenex Nederland](#)
- 13 [Chargewell and Clean Power Solutions](#)
- 14 [Cleantron](#)
- 15 [Cyclomedia](#)
- 16 [Ebike4delivery](#)
- 17 [EVBox](#)
- 18 [GeoJunxion BV](#)
- 19 [GreenFlux](#)
- 20 [Holiday Charging](#)
- 21 [Impaqed Products](#)
- 22 [MOBIAN](#)
- 23 [Mobycon](#)

- 24 [Nowos](#)
- 25 [Roetz Life](#)
- 26 [Springtime Design](#)
- 27 [Streetplug](#)
- 28 [Swapfiets France SAS](#)
- 29 [Supreme Dutch](#)
- 30 [Sure](#)
- 31 [Tiler](#)
- 32 [TRANZER B.V.](#)
- 33 [Van Raam](#)

Organisations

- 34 [Doet](#)
- 35 [Dutch Cycling Embassy](#)
- 36 [Embassy of the Kingdom of the Netherlands](#)
- 37 [FIER](#)
- 38 [Netherlands Business Council France](#)
- 39 [Netherlands Enterprise Agency \(RVO\)](#)
- 40 [RAI vereniging](#)
- 41 [Smart Mobility Embassy](#)



ABEL SENSORS

ABOUT

Abel Sensors develops and delivers smart wireless sensors for several different markets. Founded in 2014, by its CEO Ronald Bolijn, in the city of Delft in the Netherlands, the company expands its solutions all over the world. Abel Sensors' mission is to provide real time monitoring dashboards to improve efficiency and sustainability. All their smart sensor solutions enable their customers to improve their impact on sustainability. Abel Sensors aims to be energy neutral itself by 2030. The starting point for all our actions is contributing to a sustainable society by developing sustainable products. With expertise in sensor design, wireless interfaces, ultra-low power technologies, and embedded systems we create IoT devices with a battery life of up to 15 years.

Abel has its own sensor management system and APIs to connect with your digital system. Our modular sensor system makes it possible to create custom sensors in no-time to make your business more efficient. Abel Sensors has delivered detection systems for more than 120.000 bikes, all over the Netherlands, Germany, France, Belgium, and England already.

Furthermore, Abel also offers a Vehicle Guidance System with camera-based parking guidance with high accuracy detection, effective guidance, wayfinding, security features, and cloud monitoring software. The system allows to monitor each spot, for instance the occupancy of places dedicated to EV.

Our goal is to develop Detection system in Bike and Car parkings in the whole country, and to be known as the specialist, best-in class, in Smartparkings, with Web based solutions. We look forward developing partnerships with the best local partners, and to offer added value and high-quality service.



CHRISTELLE BOISRAMÉ



WWW.ABELSENSORS.COM



ABEL
sensors

ALFEN

ABOUT

Alfen is both the core and the linking pin of the electricity grid, providing transformer stations, energy storage systems, charging stations for electric vehicles as well as a range of other products and services.

With its broad array of products developed in-house and considerable experience as a systems integrator, Alfen is building the electricity grid of the future: reliable, sustainable and innovative.



CHARLOTTE DUPÉ



LUDOVIC ARVOR



MARWANE HANOUN



WWW.ALFEN.COM



ALFEN
POWER TO ADAPT



ALLEGO

ABOUT

Allego is Europe's largest, independent public charging network. We deliver charging solutions for all types and models of electric vehicles, facilitating consumers, businesses, and urban infrastructures. A leader in charging solutions, we nurture and have built an international charging network comprising of just under 40,000 public charge points, operational throughout the pan-European market. Our charging solutions are connected to the proprietary platform, EV-Cloud.

At Allego, we are committed to providing independent, reliable, and safe charging solutions, agnostic of vehicle model or network affiliation, using 100% clean renewable energy. Being a pioneering company in EV-charging solutions, we continually strive to make EV charging easier, more convenient, and more enjoyable for all.

2021 saw the first fully operational Allego charging station in France. Since then, we have grown our network of charging hubs, both own network and serviced. Similar to other regions in our European network of charge points, we want to become known as the best quality service provider for consumers, the best strategic partner for businesses, and the most reliable thought leader for urban planning partners in France.



MATHIEU LANÉELLE



SANDER SOMMER



HAROLD LANGENBERG



FRANCOISE RAGOT



CHRISTINE STRIK



ADRIEN SIMONNET



BERT REIJMERINK



ALEXEI BLOKHINE

Allego >



WWW.ALLEGO.EU

ARS T&TT

ABOUT

Since 1998 ARS T&TT has been at the forefront of sustainable mobility. Incentive schemes that reduce carbon footprints, digital itineraries reducing delays and unnecessary pollution, clean air zone and sustainable last mile logistics showcase our commitments to sustainability.

With the Olympics and Paralympics arriving in Paris in 2024 plus the delivery of green ITS to all participants in daily Parisian life we would also be an excellent enthusiastic ambassador for the international Dutch technology transport sector.

At the Autonomy 2023 event our pitch will be on traffic filters for Parisian neighbourhoods, using our vision analytics solutions and digital permit platform for special transport, navigation and parking to reduce climate stress for Parisian inhabitants during those events. For the longer term we will also showcase our robust cycle data integration in traffic centres and our proven ecological applications for public transport. Key is the monitoring of the vehicles/bikes in the smart city and deriving structural trends and patterns of movements and incidental deviations in a traffic data warehouse.

The information is input to planning systems to which both individual travellers and professional users can subscribe to be advised on departure time, route and modality of smart multimodal transport demands. The underlying machine learning based planning solutions will result in an optimum use of the transport network, minimizing the average travel time and optimizing the municipal sustainability. Traveller information with routing and rerouting guidance would be disseminated through all channels simultaneously.

MARIANNE BEZOEN



WWW.ARS-TRAFFIC.COM



BIKE.BOX

ABOUT

Bike.box specialises in innovative and design driven solutions for bicycle parking. We have developed smart bicycle parking systems which reduce chances of damage & theft. Our pedal.clip system has different versions but at its core, the bike is always parked at the pedal instead of the front wheel as most current bike parking systems do. Besides the pedal.clip bicycle parking system, we have developed various boxes such as the bike.tower, bike.box, scoot.box and cargo.box. As images say more than words, please take a look at our website www.bike-box.nl. If you are interested in (some of) our products, I would be happy to tell you more about the possibilities & conditions.



GUILLAUME MARCHAUT



[WWW.BIKE-BOX.NL](http://www.bike-box.nl)

L'avenir du stationnement
des vélos

bike.box



pedal
.clip



bike.box

BREKR

ABOUT

Brekr designs, develops and manufactures Urban Light Electric Vehicles on two wheels in a distinctive design language. Brekr uses bravery, insights, creativity and boldness to challenge the status quo in urban electric mobility. At Brekr, we see change as a chance, to build on what we love.

Brekr's first product is the Model B, an electric moped. The Brekr Model B seamlessly merges past and future into an awesome, individualistic yet logical design. The Moped is hand built in the Netherlands with a range up to 160 kilometers, combined with a low center of gravity and a lightweight aluminum frame, every ride becomes unforgettable.

In December 2022, Brekr revealed its new product: the Model F. The Brekr Model F is a revolutionary fat bike, with the iconic Brekr design as well as exclusive and innovative features. Beat traffic, your style.

Currently, Brekr is active in 5 European countries and wants to expand to 10 extra countries in Europe.



NIELS WILLEMS



H EL ENE LASSET



[WWW.BREKR.COM](http://www.brekr.com)



CARGO CYCLING

ABOUT

Cargo Cycling is offering mobile cycling solutions for sustainable and urban transport, and is a brand of the parent company Nijland Cycling which produces strong and sustainable bicycles for over 30 years. The innovative products of Cargo Cycling are covering a portfolio of cargo bikes that provides a solution for every entrepreneur or company to transport up to 1700 liters in city centres and villages. The development and production is done completely in-house, with an own development team, welding department, painting shop, wheel building and the assembly department. Quality and sustainability are key priorities, and next to this a circular solution is offered to customer to refurbish bikes to be suitable for a second life.



KOEN NIJLAND



LUUK NIJLAND



WWW.CARGOCYCLING.COM



CENEX NEDERLAND

ABOUT

Cenex Nederland is an independent not-for-profit Consultancy and Research Technology Organisation specialising in Zero Emission Mobility, Energy Infrastructure and Circular Mobility. Our mission is to help catalyse the market development of mobility innovations that stimulate transition towards sustainable energy, resource efficiency and inclusiveness, making the world a better place to live and travel in.



**SANNE VAN
BREUKELLEN**

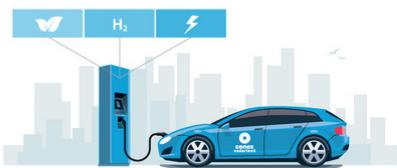


**JORDEN VAN DER
HOOGT**



[WWW.CENEXGROUP.NL](http://www.cenexgroup.nl)

Driving Mobility Towards a Smart and Sustainable Tomorrow



Zero Emission Mobility



Energy Infrastructure



Circular Mobility

www.cenexgroup.nl



CHARGEWELL AND CLEAN POWER SOLUTIONS

ABOUT

Chargewell and Clean Power Solutions have entered a partnership to serve the fast-growing market together.

We offer charging solutions for the private market, companies, association of owners and fast charging for heavy duty charging.

We create the right charging solution that is future-proof for every customer and every location.

Outside the Netherlands, we're already active in Belgium, Austria, and Germany. France is our next great step to expand our European portfolio.



SACHA TIBBOEL



JOHAN KRUIZINGA



[WWW.CHARGEWELL.NL](http://www.chargewell.nl)



[WWW.LAADPAALDIRECT.NL](http://www.laadpaaldirect.nl)



CHARGEWELL
connecting energy

CLEANTRON

ABOUT

Cleantron develops and produces Li-ion Battery Modules and Systems, they are the largest battery producer in the Netherlands.

Cleantron batteries are applied in market sectors Industry, Non-road application, Marine and Electric Mobility. Electric Mobility concerns batteries for special e-Bikes (special need bikes, cargo bikes) and light electric vehicles like last mile delivery vehicles, electric motorcycles and microcars.

Cleantron has sales offices in France, Germany and a purchasing office in Thaizou (China). Cleantron is successful in France in sectors Marine (example Neocean) and Non-road Agri (example ToutiTerre).



PHILIPPE MARGUERON



PHILIPPE MEIGNEN



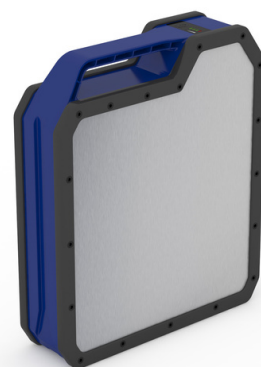
DION STAD



MAURICE KLEIN



WWW.CLEANTRON.NL



CYCLOMEDIA

ABOUT

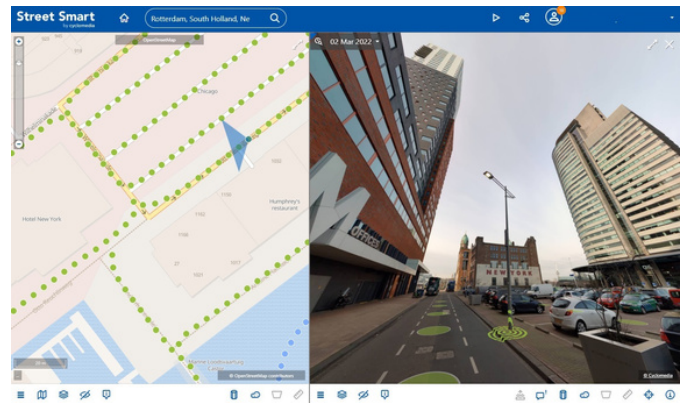
Cyclomedia is an international company specialised in mobile mapping. Using the most accurate 360° visualisations at street level, complemented by innovative AI-driven analytics, Cyclomedia provides its customers with actionable information and insights. The precision and resolution of the data contribute to a natural, realistic and objective view on public space.

The petabytes of data we collect every year are used by 'professional users' ranging from city governments to companies working in utilities, infrastructure and insurance, among others. Today, our solutions make cities safer, greener, more accessible and smarter, by helping governments and businesses make the right decisions based on up-to-date and accurate data.

BART VERHOEVEN



WWW.CYCLOMEDIA.COM



cyclomedia

EBIKE4DELIVERY

ABOUT

Ebike4Delivery is the global market leader in smart, sustainable, and reliable last-mile delivery solutions. Our headquarters is located in The Netherlands and with a fast growing international team of more than 25 different nationalities we provide support to customers all across Europe and the world.

Our Dutch A-Brand company has been producing the first motorized, chain-driven and transport bikes already since the 19th century. We have since made large investments in research and development of our unique parts, that are especially designed and manufactured for the most intensive, professional use. Electrical bikes are the most efficient solution for last mile deliveries of mail, packages, (fast) food, medicine and groceries.

Also, Electrical bikes are the most sustainable solution compared to traditional transportation, such as cars and scooters, contributing to your climate targets by reducing carbon emissions, improving efficiency and customer experience. Our most recent proprietary technology innovations provide fleet performance analysis, fleet lifecycle management, in-app payment, vehicle tracking, vehicle behavior analysis, error-monitoring, and anti-theft, all through integrated software, making it possible to track vehicles, analyze their behavior, and receive alerts in case of errors or theft.

The delivery e-bikes are available for B2B customers, through direct purchase, financial or operational leasing, to ultimately even include all supplementary charges such as insurances, and maintenance and repair - even right at your doorstep.

We understand customer needs and urgency for the strongest product, best service and high tech technologies, that guarantee professional delivery operations, productivity and reliability. Therefore Ebike4Delivery is already preferred partner and first choice of many leading industry brands.



ARNO CUP



FRANS BRITTIJN



WWW.EBIKE4DELIVERY.COM



EBIKE4
DELIVERY

EVBOX

ABOUT

Founded in 2010, EVBox empowers forward-thinking businesses to build a sustainable future by providing flexible and scalable electric vehicle charging solutions. With its offering of residential, commercial and fast charging stations, as well as scalable charging management software, EVBox ensures that electric mobility is accessible to everyone.

The company has shipped over 400,000 charging ports to customers and partners and processes more than 1.4 million charging transactions per month on the EVBox Everon charging management software.

Backed by ENGIE, EVBox is a leader in R&D, with facilities across Europe and North America developing groundbreaking electric vehicle charging technology.



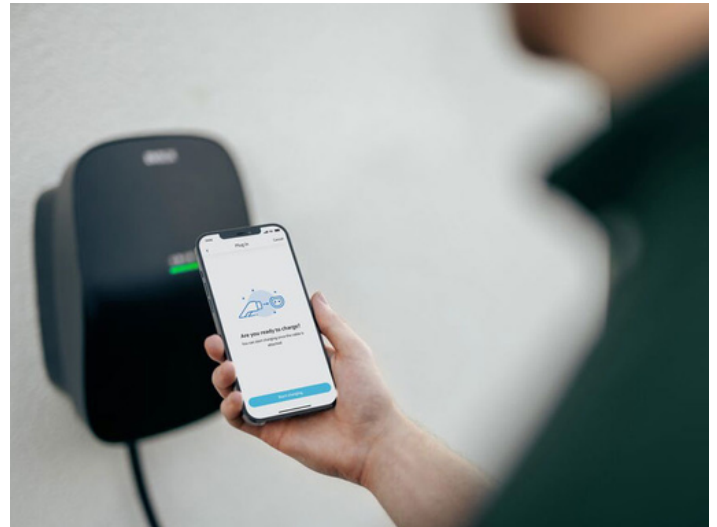
AMÉLIE TREGOUE



SYLVAIN ROBINE



[WWW.EVBOX.COM](http://www.evbox.com)



GEOJUNXION

ABOUT

GeoJunxion is at the crossroads where location-aware content connects with innovative geo-solutions and services. The GeoJunxion mission is focused on improving road safety and contributing to a more sustainable world, reducing the environmental impact through intelligent solutions which enable more environmentally conscious decisions. With location-aware content at our core and the know-how of location technologies, GeoJunxion offers unrivalled, intelligent products and services. For example:

Eco Alert Zones

Aggregated information in a geographical database related to driving restrictions to combat traffic congestion and improve air quality with Low Emission Zones, Congestion Charging & Limited Access Areas that effects diesel cars, commercial vehicles, taxis, buses, mopeds, motorcycles, lorries and more.

Safety Alert Zones

Smart and dynamic polygons for areas with higher probability of accidents in certain specific conditions, such as schools, tunnels, bridges, accident prone areas, playgrounds and many more.

Location Intelligence Data Services

Custom data search, collection, aggregation, harmonization and normalization to enhance the maps to align with the use-case of the customer.



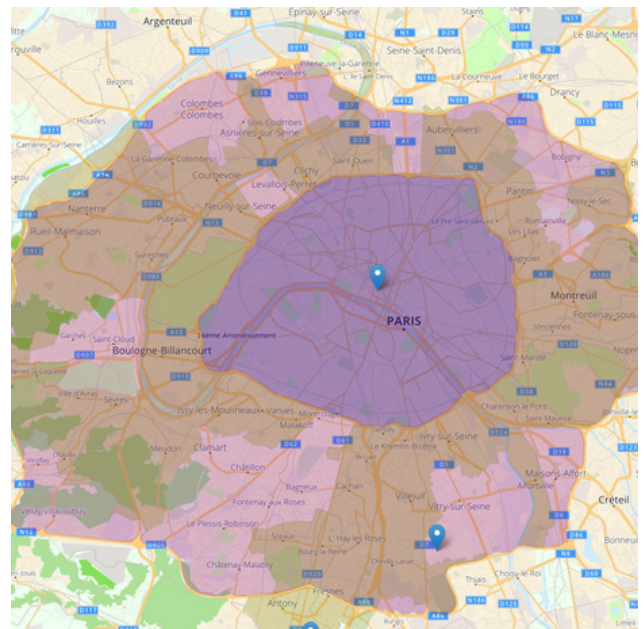
STEF VAN DER HELM



ARJAN SPIJT



WWW.GEOJUNXION.COM



GREENFLUX

ABOUT

At GreenFlux we enable the smartest e-mobility services in the world. Our e-mobility platform solutions empower charge point operators and mobility service providers to efficiently operate and scale their charging networks.

Our platform delivers a comprehensive set of essential capabilities that include charge station commissioning, configuration and maintenance, EV roaming and access entitlement, tariff setting, billing and payment enablement, driver care, and enterprise system integration. Our powerful capacity and power management tooling gives customers the ability to intelligently steer the charging process.

Leveraging our platform, our customers provide drivers with exceptional charging experiences at residential, workplace, and retail locations, as well as alongside highways and within cities.

Since 2011 we've delivered practical and innovative real-world solutions to some of the most ambitious e-mobility companies in the world.

In 2021 we joined the DKV Mobility Group. Together, we proudly pursue our mutual purpose to accelerate the transition towards sustainable mobility.



JORRIT BERKHOUT



[WWW.GREENFLUX.COM](http://www.greenflux.com)



greenflux



HOLIDAY CHARGING

ABOUT

Holiday Charging is part of Emobility Consulting. Emobility Consulting has over 14 years experience in electric mobility and charge infrastructure. The main office is based in The Netherlands and work is done across Europe. Two years ago the owner of Emobility Consulting moved to France. He started Holiday Charging to support campings, hotels, B&Bs and people with a second / holiday home with charging infrastructure, solar panels, energy storage systems and the total management and billing toward the users (electric vehicle drivers). This is offered via a full financed one-stop-shop concept. Energy management and integration of charging infrastructure, solar panels and energy storage are not common yet in France. Holiday Charging is working together with the Dutch company Maxem to facilitate this.

Recently a survey conducted among Dutch and French and English persons who are active in the hospitality sector in France with hotel, B&B, campings, etc. This was done together with NBSO Lyon, Emobility Consulting France and Nederlanders.fr. In this survey the current situation and interest of this market in charging infrastructure was checked. A whitepaper and presentation is available at the event with the results.



MICHEL BAYINGS



WWW.HOLIDAY-CHARGING.COM



IMPAQED PRODUCTS

ABOUT

Impaqed Products BV has been founded in 2008. We see ourselves as a European company based in the Netherlands.

Over the years Impaqed Products developed into a leading and innovative specialist in the field of TPMS, tire pressure monitoring systems, offering a range of professional products for all types of (commercial) vehicles; busses and trucks, trailers, building machinery, etc.

A sub-speciality is linking TPMS data to telematics, computers and smart vehicles. Using TPMS to ensure the correct tire pressure has a positive impact on sustainability, fuel/energy consumption, emissions, road- and passenger safety, operating cost and vehicle downtime. Our systems also measure temperature which helps early detection of brake- and wheelbearing issues, and helps planning preventive maintenance.



BERT DE BOER & MARGARET FEENSTRA



WWW.IMPAQEDPRODUCTS.EU



IMPAQED PRODUCTS

MOBIAN

ABOUT

Smart mobility hubs by MOBIAN keep cities reachable and contribute to a sustainable, liveable car-free city. In urban areas that are increasingly congested, space is more limited and the car is far too dominant. With the globally shared goal of improving the quality of public space, the polluting and obstructive car must be withdrawn from the city centre. At MOBIAN we strongly believe that offering motorists a powerful, affordable and user-friendly alternative, will result in returning valuable space to the city.

A Park & Ride mobility hub is our solution for commuters, residents and visitors to park their car on the outskirts of the city and switch over to a green, efficient and more appropriate last mile (e-)mobility. As a one-stop shop MOBIAN offers multimodal travelling in one customer journey by connecting the first mile to a last mile solution.

To ensure a seamless, accessible and most easy way of travelling, our hubs are fully digital and easy to use by using the app: pre-booking of the parking spots as well as the last mile mobilities, opening the barrier and the smart bike locks, managing existing bookings and the use of additional facilities like parcel lockers and EV charging. Transforming (underutilised) parkings into a mobility hub will increase visibility and occupancy rate of the parking space. In addition, it will be a powerful upgrade of the parking by adding valuable facilities.



MAAIKE VAN DER KROON



EVA BOER



[WWW.MOBIAN.GLOBAL](http://www.mobian.global)



MOBYCON

ABOUT

At Mobycon, we believe that if individuals, businesses and communities are to thrive, ease and freedom of movement are fundamental. As an organization, our research, consulting and design services focus on promoting and enabling sustainable mobility choices. Our work is dedicated to giving people access to transportation options so they can make the best choice for today and for the future.

Since 1986 our team of professionals has worked collaboratively with clients to develop integrated and sustainable mobility solutions in the Netherlands and abroad. We recognize the role Dutch inspiration can play in creating transportation plans and strategies globally, implementing connected networks and public spaces, creating programmes and policies that encourage continued sustainable practices. We are focused on sharing our extensive knowledge of integrated mobility solutions through workshops and design reviews in Europe and North America.

Our goal is not just to copy Dutch design to international environments. We understand how important it is to provide our clients with solutions that work in the context of their community, using our diverse range of knowledge and expertise to shape policies, plans and strategies that encourage sustainable mobility choices. Mobycon is a trusted partner!



BRETT PETZER



[WWW.MOBYCON.COM](http://www.mobycon.com)



NOWOS

ABOUT

NOWOS is a social enterprise specialized in Lithium Ion batteries. Our experience in the engineering, development, production and recycling of lithium-ion batteries gives NOWOS exceptional expertise on how to repair a battery more efficiently with the aim of extracting as many raw materials as possible.

Today, many batteries are destroyed without first considering repair. So we want to share our expertise and knowledge with our exclusively professional target, and we believe that efficient repair and recycling of used lithium batteries is a much more sustainable solution than the extraction of virgin raw materials in mines.

We support companies in the safe transport of their batteries to our three repair plants based in the Netherlands, England and France. The batteries refurbished by our experts are then returned to the market.

For first-life batteries that cannot be repaired, NOWOS offers a second-life solution with the extraction of components that may be necessary for the repair of another battery, but also the constitution of new batteries.

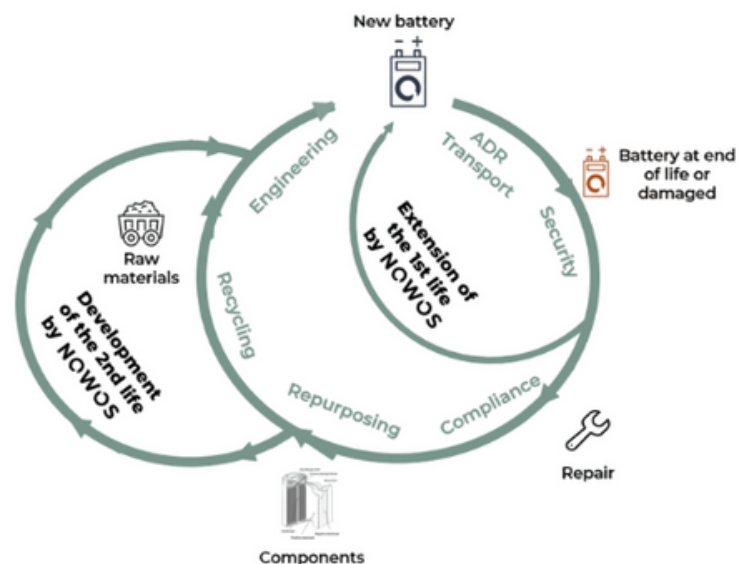
By becoming an expert in extending the life cycle of a lithium battery, NOWOS becomes an actor in decarbonization.



AMBRE EPPLER



[WWW.NOWOS.COM](http://www.nowos.com)



NOWOS

ROETZ BIKES

ABOUT

In the Netherlands, each year one million bicycles become waste. We believe that no bike should be designed to end up in a landfill after use. We want to prove that it is possible to minimize the harm to our planet and at the same time provide the best experience for our riders.

Join the circular mission, and start the ride of your Life. The e- bike that is designed to ride forever. Built from high quality modules, (re-)configurable to your needs. Continuously monitored, with next day service. All to guarantee a worry free ride, for life.



TIEMEN TER HOEVEN



WWW.ROETZ-BIKES.COM



SPRINGTIME

ABOUT

Springtime Design is an urban mobility design and innovation studio. We are based in Amsterdam and have our tentacles all over the globe. We develop innovative products and services, such as private and shared mobility and last mile delivery solutions. The studio owns over 25 years of built up business intelligence (market, product, user) and is servicing high profile customers worldwide in Micromobility and light EV, such as Mobike (now Meituan), Tier Mobility, Dutch Rail, Dott and Lyft.

Ahead of the trend, we translate insights and opportunities into real, tangible solutions for our customers, that drive businesses and excite users. We are passionate about anything that moves and to envision possible futures.

If you believe Springtime can help to drive your business, please contact us to discuss the possibilities. We love to think with you about your mobility innovation needs.



MARCEL SCHREUDER



JOHN KOCK



WWW.SPRINGTIME.NL



STREETPLUG

ABOUT

StreetPlug B.V., founded in 2016, is a Dutch producer of EV charging solutions. Already in 2016, the company was granted the award for 'Good Industrial Design' for developing an underground EV-charger, a unique innovation.

After developing the underground charging solution SP1 ('invisibly present'), StreetPlug continued to develop various other products resulting in a wide range of innovative charging solutions for different applications.



JORIAN BEUNS



GUY VANDEVIJVERE



WWW.STREETPLUG.NL



SMART EV CHARGING SOLUTIONS

SWAPFIETS

ABOUT

Swapfiets is the world's first 'bicycle as a service' company. Founded in 2014 in the Netherlands by 3 students, the scale-up quickly developed into one of the leading micro mobility providers in Europe with a total of over 280.000 members in the Netherlands, Germany, Belgium, Denmark, France, Italy, Spain, Austria and the UK.

The concept of Swapfiets is quite simple: For a monthly subscription fee, Swapfiets members receive a fully functional bicycle or e-mobility solution for their own use. If needed, a repair service is available within 48 hours to repair or directly swap the bike at no additional cost. Swapfiets' bikes are designed and produced in-house. Swapfiets achieved the B-Corp certification in late 2022, and contributes to making European cities more livable, with the goal of having 100% circular products and reaching carbon neutrality by 2025.



ARNAUD PELLEGRIN



JOEP SCHREUEL



RADU OLARIU



CLÉMENCE SPIELBERGER



BRUNO BUISSON



WWW.SWAPFIETS.COM

Swapfiets



SUPREME DUTCH

ABOUT

Supreme Dutch is a company based in The Netherlands that develops and produces (bicycle) tires completely without air. After 10 years of development time and a 5-year exclusive partnership with tire brand Schwalbe, Supreme Dutch has opted for a direct B2B business model without intermediaries.

The Airless inner tube has been developed from the idea of being 100% maintenance-free. This has led to an unique product which is a very interesting solution for specific target groups. Supreme Dutch also develops and produces Airless solutions for various Light Electric Vehicles with associated mounting equipment.

Every day, worldwide, tens of thousands of cyclists benefit from the advantages of the Supreme Dutch Airless inner tubes. Your bicycle fleet soon too?



KEVIN KESTELOO



NEIL VAN DEN HAAK



WWW.SUPREMEDUTCH.COM



SUPREME
DUTCH
AIRLESS TIRES

A large, stylized black silhouette of a bicycle, positioned to the right of the text.

SURE

ABOUT

SURE offers businesses a comprehensive range of e-mobility solutions, including micro-mobility vehicles, charging solutions, connected services, and marketing tools. At the center of our business concept is the SURE e-bike, which is designed to meet the harshest company use conditions, with a fast-charging time of just 30 minutes and a patented battery technology that has a life span ten times longer than conventional battery systems.

Due to the use of our non-flammable hybrid supercapacitor batteries, there's no need to purchase expensive charging cabinets, expensive insurance policies or worry about charging E-bikes indoors.

Our E-bikes fast charging capabilities, means that riders no longer need to wait 6 to 8 hours for their E-bikes to charge, increasing productivity.

The use of our battery technology also means an increase in safety and sustainability due to the significant decrease in the use of toxic and flammable materials.

With the smart combination of innovative technology, branding options, charging and software solutions, SURE is able to create mobility hubs that are unique, cost effective, and digitally integrated.

Be SURE, ride SURE!



FRANCIS OLAJIDE



EELCO SCHAFFER



WWW.SURE-MOBILITY.COM



SURE

Be sure, ride Sure!

TILER

ABOUT

TILER has developed a charging solution to wirelessly charge e-bikes on a Charging Tile, via the special Charging Kickstand. It provides a universal and intuitive way of charging shared e-bike fleets.

Users charge the e-bike by simply parking it and the next user can rely on an e-bike that's charged and ready to go. It helps e-bike fleet operators to operate a shared e-bike fleet with limited operational costs and full availability of the fleet. No more hassle with fragile cables, or users that forget to charge the e-bike, but a sturdy, reliable solution.

Currently the focus is on e-bikes, but the tile is developed to charge all light electric vehicles, creating a whole TILER-Network.



CHRISTIAAN VAN NISPEN



AMARINS TAMMINGA



WWW.TILERCHARGE.COM



T I L E R
U

TRANZER

ABOUT

Tranzer is the leading European platform for public transport ticketing. We want to make public transport easily and comfortably accessible to everyone, in any app. All the different travel options from A to B, compared clear and fair. Plan, Book, Pay and Travel, for all public transport operators in Europe.

For Tranzer Mobility as Service is a synonym for changing behaviour. We show the best travel options on the spot and give insight into the effect of these options (cost, CO2, time). Our mission is to connect and combine all public transport operators in Europe and make their tickets available in any app of the customers choice.

Our technology integrates long-distance rail combined with other modes, and offers this as an API and platform service to partner platforms and super apps.

Public transport operators in the Netherlands and abroad such as NS, Connexion, GVB, SNCF, Deutsche Bahn and Thalys already offer their tickets via our service. And major parties such as OV9292 and Freenow already offer tickets to customers via Tranzer.



PAUL ROOIJMANS



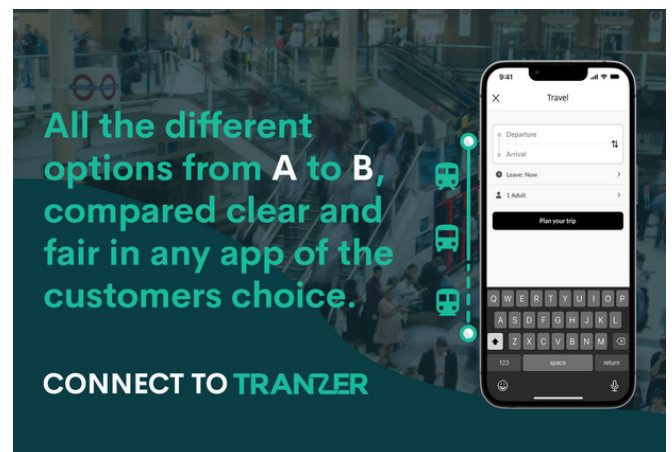
LORCAN LE PEN



SANNEKE MULDERINK



WWW.TRANZER.COM



TRANZER

VAN RAAM

ABOUT

Van Raam is a manufacturer of special needs bicycles and is specialized in the production of tricycles, the mobility scooter bike, low step-through bicycles or comfort bikes, the walking aid, side-by-side tandem bikes, tandem bikes, wheelchair bikes and transport bikes. We want to contribute to the integration of people with a disability into society. That is the reason Van Raam exists. We are proud of what we are achieving with each other, and of the sustainable impact we have on our customers. Currently, we are doing this with around 285 colleagues.

Let's all cycle!

At Van Raam we believe that when people stay mobile and independent longer, they are happier. That is why we offer people with a disability, and people that cannot cycle on a traditional bicycle with two wheels, a sustainable form of modern-day mobility. With a Van Raam bike you experience independence and freedom.



MARNIX KWANT



JORY SPEKKING



WWW.VANRAAM.COM



vanraam[®]
Let's all cycle



DOET

ABOUT

Founded in 2009, DOET (Dutch Organisation for Electric Transport) is the industry association of pioneers in the field of charging infrastructure, light electric vehicles, smart grids and electric cars. Our mission is 100% electric mobility using 100% sustainable energy. We are convinced that these innovations have vast environmental and commercial potential.

In cooperation with knowledge institutes, NGOs and governments, we are taking electric mobility to the next level.

DOET wants to expand and exchange its knowledge and network to develop electric mobility worldwide. Is your organisation interested in joining our mission?

MICHEL VAN LINDERT



WWW.DOETDOET.NL



Dutch Organisation for Electric Transport

DUTCH CYCLING EMBASSY

ABOUT

The Dutch Cycling Embassy wants to share their expertise and technology as the world's number one cycling country to facilitate cycling worldwide as the most modern, efficient, and sustainable method of transport. The growing interest in Dutch practices in urban transport is mainly due to a transition of the transport sector towards sustainability and the rediscovery of the bicycle as a means of transport. Cycling not only contributes significantly to urban mobility, road safety and emission reductions, but has also positive impacts on the economy, social inclusion and health.

Worldwide the Netherlands has the highest bicycle use and provides the widest range of cycling know-how, products and infrastructure. With over 40 years of experience in bicycle policy and practical bicycle solutions, the Netherlands are a unique international testing ground. It is our mission to share this experience with you.

We are a partner to foreign parties that want to promote their cycling with the help of Dutch expertise. The Dutch Cycling Embassy answers questions and requests about Dutch cycling standards and receives delegations from all over the world. Whether your goals involve research, planning, policy-making, product development, manufacturing, construction or building, we can help you find the best possible partners. The Dutch Cycling Embassy acts as an intermediary between a number of different parties:

- 'government to government' exchange (e.g. knowledge-sharing)
- 'business-to-government' (incl. consultancy and construction of bicycle parking and other facilities)
- 'business to business' (e.g. bicycle parts)
- 'business to consumer' (e.g. bicycle industry).



CHRIS BRUNTLETT



MARGOT DARIS



EMMA STUBBE



WWW.DUTCHCYCLING.NL



EMBASSY OF THE KINGDOM OF THE NETHERLANDS

ABOUT

France is one of the most important trading partners for the Netherlands. To make the best use of the opportunities in France, the economic cluster of the Dutch Embassy in Paris is at your service. Together with the Netherlands Enterprise Agency (RVO) and the Netherlands Business Support Offices (NBSO) in Nantes and Lyon, we aim to create opportunities for Dutch companies and knowledge institutions by strengthening economic relations between France and The Netherlands.



ADRIANA VOERMAN



JOANNETTE POLO



WWW.NLINFRAANKRIJK.NL



Kingdom of the Netherlands

FIER

ABOUT

FIER Sustainable Mobility, Netherlands (since 1995) is a consultancy, research and business development company, specialised in zero emission mobility, logistics and (road) freight.

Dedicated to sustainability and innovation. Our team initiates, develops and manages impact driven (EU co-funded) projects and builds public-private-consortia. FIER supports local, national and EU public authorities in defining policies for electric mobility and (smart) charging infrastructure.



HARM WEKEN



[WWW.FIER.NET](http://www.fier.net)

Charging Infrastructure

E-mobility tools and policies

Transport electrification and hp charging

Fleet assessment & Support

Electrification of heavy duty



NETHERLANDS BUSINESS COUNCIL FRANCE (NLBC)

ABOUT

The Netherlands Business Council France (NLBC) is a vibrant member's organization, accessible to all. A place where entrepreneurs, SME's, multinationals and managers can network, learn, revolutionise and grow: a link between doing business in the Netherlands and France, public institutions and private entities, as well as national and regional markets in France.

NLBC's mission is to support Dutch companies and executives to be successful in the French market. NLBC is dedicated to act as a catalyst, coordinator, representative and educator using the community network, partnerships, services, committees, media, social responsibility and sustainable ideas to promote business development, trade and investment.

Do you need advice on entering and succeeding in the French market? Do you want to connect with French partners? Do you need to be directed to the right and trustworthy service provider(s)? We will provide you rapidly with information and advice.

We are located in Paris, the economic heart of France from which we operate to cover the entire country.



ANOUK ZOET



LISE LOTTE PEL



GHALIA ZEBIRI



WWW.NLBC.FR



Network partner of



NETHERLANDS ENTERPRISE AGENCY (RVO)

ABOUT

The Netherlands Enterprise Agency is the executive agency of the Dutch Ministry of Economic Affairs. The Agency promotes sustainable development and innovation, both within the Netherlands and abroad. The aim is to improve opportunities for entrepreneurs and strengthen their position, nationally and internationally.

Through the Netherlands Enterprise Agency both national and foreign organizations may gain access to a broad Dutch network of knowledge institutes, research centers, trade associations, companies and government departments. The agency participates in numerous international platforms and counselling groups. It helps with finding grants, business partners, know-how and compliance with laws and regulations.



[WWW.RVO.NL](http://www.rvo.nl)



Netherlands Enterprise Agency

RAI AUTOMOTIVE

ABOUT

RAI Automotive Industry NL is the cluster organisation of the Dutch automotive industry, mobility sector and automotive education and has about 200 members.

RAI Automotive Industry NL's mission is to initiate and implement numerous activities to strengthen the Dutch automotive sector, focusing in particular on innovation, education/training, internationalisation, knowledge gathering and networking. RAI Automotive Industry NL is based at the Automotive Campus in Helmond.



BRAM HENDRIX



[WWW.RAIVERENIGING.NL](http://www.raivereniging.nl)



SMART MOBILITY EMBASSY

ABOUT

“The gateway to Dutch knowledge and expertise in the field of Smart Mobility in the Netherlands”

Challenges in mobility do not stop at national borders. Together, we can strive for affordable and safe mobility, accessible to all and without emissions.

By cooperating with international parties and exchanging experiences, the Smart Mobility Embassy wants to create opportunities that did not exist before. With our international community, we can tackle any challenge from different perspectives, leading to creative approaches and solutions.

In addition, we receive issues and requests about smart and green mobility from around the world, that we tackle together with the national and international network. We help to organise in- and outbound delegations, webinars, congresses, study trips and trade missions.



MARIJE DE NIJS



TOM VAN DAM



WWW.SMARTMOBILITYEMBASSY.NL

